

KEN BROSE ESTATE RANCH AUCTION

SATURDAY, SEPTEMBER 7, 2024 10:00 A.M.

LOCATION: FROM GLENDIVE, MT- TAKE HIGHWAY 16 NORTH TOWARD SIDNEY FOR 7.5 MILES, TURN LEFT FOR ¼ MILE. FOR MORE INFORMATION: DIANA BROSE 406-687-3277
Lunch will be available.



VEHICLES & TRAILERS

- 2015 GMC Yukon SLT, leather, sunroof, 94,300 miles
- 1990 Pontiac Firebird, 141,000 miles (one owner)
- 1948 Willys Jeep
- 1990 GMC Topkick Truck, SLE, Cat diesel engine, auto, 21' box & hoist, bale rack (NO sides)
- 1956 Dodge Job Rated Truck, 15' box
- Barrett 21' gooseneck aluminum Stock Trailer
- Road King 18' bumper-pull Car Trailer, heavy axles
- Road King 4x10' ATV Trailer

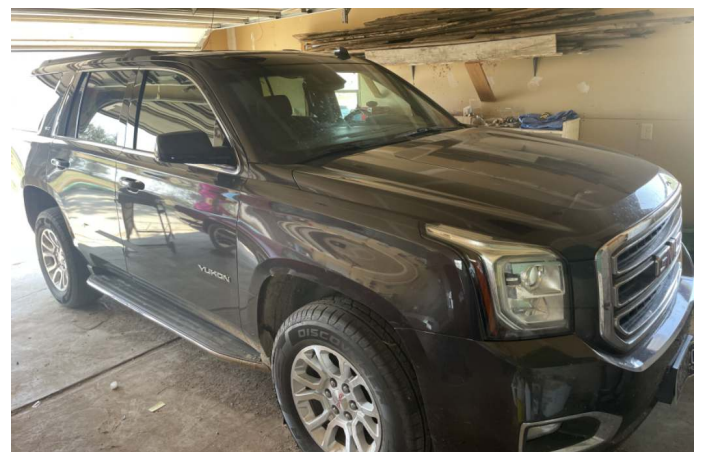


SHOP & MISC.

- Century Flux Cored 90 DC Inverter Wire Feed Welder
- Hobart Welder
- Bench Grinder
- Air Compressor
- Drill Press
- Wood Lathe
- Band Saw
- Table Saw
- 7000-watt Honda Generator
- Floor Jack
- Shop Vac
- Makita Electric Drill
- Sawzall
- Circular Sander
- Circular Saw
- Miter Saw
- Battery operated Sprayers
- Electric Paint Sprayer
- ATV pull-type Sprayer
- Backpack Sprayers
- (2) 550-gallon Poly Tanks
- (2) Electric Water Pumps
- Gas Water Pump
- Misc. Extension Cords
- Wrenches, Sockets
- Screw Drivers, Hammers
- Ladders, Picks, Shovels, Rakes
- Forge & Forge Tools
- (2) Gas Weed Eaters
- Long Folding Tables
- Folding Chairs
- Matching Couch, Coffee Table, End Table & TV Stands w/2 drawers
- Several Dutch Ovens

TRACTORS & LIVESTOCK EQUIPMENT

- JD 4010 diesel Tractor, PTO, hydraulics, NO 3 pt. & Farmhand Front-end Loader w/bucket & grapple
- JD 855 diesel MFWD Tractor w/JD 52 Front-end Loader w/bucket, 1644 hours
- 3 pt. Post Hole Digger, 2 Augers
- 3 pt 5' Tiller
- 3 pt. Mower
- Farmall H Tractor, PTO w/Front-end Loader
- Shaver Post Pounder
- Round Horse Bale Feeders
- Real Tuff Chute w/Palp Cage
- Misc. Portable Panels
- 10' Tartar Feeders
- Salt & Mineral Feeder
- Calf Warmer
- Calf Sheds
- (3) Saddles
- Halters, Bridles, Lariats
- Harness, Neck Collars
- Set of Chaps, Misc. Spurs
- Chuck Wagon
- Antique Manure Spreader
- Horse Drawn Plow
- Hay Sled
- Horse Training DVD's
- Horse Magazines



Circle, Montana **Statewide Auction** (406) 485-2548

WE SELL & ADVERTISE ACROSS THE UNITED STATES

www.r-kauction.com

Rick Kniepkamp (406) 485-2548 or cell (406) 939-1632

AUCTIONEER'S NOTE:

Ken passed away and Diana is offering these items for auction. Ken took great pride in his machinery and livestock equipment. Most of the equipment was kept in an open face shed. Some of the vehicles were kept in a closed shed. This will not be an all-day auction. We hope to see you on September 7th.
~Rick

All information is from sources deemed reliable, but is not guaranteed by the Sellers or the Auctioneers. Offering is subject to error, omission, and approval of purchase by owner. We urge independent verification of each and every item submitted to the satisfaction of any prospective buyer. It is every potential bidder/purchaser's sole responsibility to accomplish his or her due diligence in whatever manner he or she deems advisable. Announcements made sale day take precedence over any printed materials. The items sell "As is-Where is." R-K Statewide Auction Service and its auctioneers are acting solely as auctioneers for the Sellers.

ELK RIVER PRINTING • SIDNEY, MONTANA