

# WENDELL PAWLOWSKI ESTATE & MCCONE CO EQUIPMENT

# AUCTION

LOCATION: MCCONE COUNTY FAIRGROUNDS, CIRCLE, MT  
 OWNER: MARY PAWLOWSKI  
 FOR MORE INFORMATION: KEN NELSON 406-939-0098  
 LUNCH WILL BE AVAILABLE.



## SATURDAY, MAY 29, 2021 | 9:00 A.M.



### VEHICLES & EQUIPMENT

- 2001 Dodge Ext. Cab 1/2 ton 4x4 Pickup
- 1999 Dodge Ext. Cab 3/4 ton 4x4 Pickup
- 2010 700 Arctic Cat 4-Wheeler w/blade
- 2003 300 Arctic Cat 4-Wheeler
- 1979 Ford 1/2 ton 4x4 Pickup (runs, but needs work)
- JD 7520 4-wheel drive Tractor & Degelman 12' Dozer
- 1940 Farmall M w/F-11 Loader (runs)
- 1966 JD 4020 diesel Tractor w/JD 46A Loader (runs, but needs work)
- Older Bobcat M-700 Skidsteer (runs)
- 1964 JD 4020 gas Tractor w/JD 158 Loader (does not run)
- 1940 JD A w/JD #8 Mower (does not run)
- 1941 Ford 9N Tractor (runs, but needs rear wheels & other work)
- 1988 Mercury Car (does not run)
- 1958 Chevy 1 1/2 ton Truck (does not run)
- 1953 GMC 7-window Truck (cab & chassis)
- 2000 Rokon Trail Breaker Motor Bike
- 1975 24' Coachman Camper Trailer
- MF 20' Tandem Disc
- (2) JD #37 9' Mowers (1-for parts)
- 6' JD Rotary Mower
- JD 12' Drill (needs work)
- 1995 2-sled Snowmobile Trailer
- 1986 Wilray 24' Tandem Axle Trailer
- Homemade Tandem Axle Trailer (no title)
- Homemade Car Trailer
- (2) Pick-up Box Trailers (no titles)
- JD Post Pounder
- 6' Box Scraper
- Misc. JD Tires & Rims

### SHOP & MISC.

- 300-gallon Fuel Tank on stand
- 100-gallon Fuel Tank
- (2) 100# Propane Tanks
- Campbell Hausfeld 5 hp Air Compressor
- Chicago Electric 5000 Generator
- Lincoln SP100 Wire Feed Welder
- Stick Welder
- 20-ton Hydraulic Press
- 20-ton Hydraulic Jack
- 5-ton Electric Wood Splitter
- 18" Scroll Saw
- Hydraulic Porta Power Anvil
- (2) Ban Saws
- Bench Top Drill Press
- 6" Sioux Bench Grinder
- (2) 5" Bench Vises
- Bench top Milling Machine
- Enco Power Hacksaw
- Small Sand Blaster
- 12-volt Winch
- Electric Game Hoist Winch
- Several Floor Jacks
- Kerosene Space Heater
- Older Wood Lathe
- Small Wood Lathe
- Heavy Duty Shelving Unit
- Circular Saws, Drills
- Reciprocating Saws
- Misc. Power Tools
- Acetylene Cutting Torch
- Belt Sander
- (2) Chain Saws
- Numerous Log Chains
- Log Roller
- Chain Boomers
- Come-a-longs
- Gear Pullers
- Creepers
- Farm Hand Pump
- Moving Dollies
- Several Ladders
- Coleman Lantern & Stove
- Lawn Cart
- Shovels, Rakes, etc
- Wheel Barrow
- Live Traps



### GUNS

- Winchester 1894 Rifle .30 WCF MFD 1897
- Winchester 1873 Rifle .22 Short MFD 1902
- Winchester 1894 SRC .30 WCF MFD 1907
- Winchester 1894 Rifle .32 WS MFD 1914
- Winchester 1894 SRC .32-40 MFD 1912
- Winchester 94 SRC .25-35 MFD 1927
- Winchester 1892 SRC .25-20 MFD 1925
- Winchester 94 16" Trapper 30-30 MFD 1979 (in box)
- Winchester 94 Rifle 1966 Winchester Centennial 30-30 (in box)
- Winchester 94 SRC 1966 Winchester Centennial 30-30 (in box)
- Winchester U.S. 1917 30-06 w/Redfield Peep Sight, bolt
- Winchester model 670 30-06 w/Weaver 4x, bolt
- Harrier .177 Target Air Rifle
- Beretta A390ST 12-gauge Trap Gun
- Remington 788 22/250 w/Weaver 3-9x
- Winchester 70XTR .338 Win Mag w/Simmons 3-9x
- Remington 870 12-gauge Mag (left hand)
- Ithaca Mag 10 Deluxe 10-gauge
- IZH94 Over/Under 30-06
- Ruger M77 Mark II 30-06 w/Simmons 4-16x
- Savage 11 7MM-08 w/Leupold 3-9x
- Winchester 290 .22 LR w/Weaver
- Browning A-Bolt .338 Win Mag
- Ruger M77 Mark II .223 Rem. w/Tasco
- Mossberg 100ATR .270 Win. w/Arms Corp Sportview
- Savage 110 7MM Rem Mag w/Bushnell
- Ruger M77 Mark II .300 Win Mag w/Redfield 4x
- Thompson Center Contender Super 14 .45 Win Mag Pistol
- Winchester 1400 Mark II 12-gauge Semi Auto
- Savage 170 30-30 Pump
- Stevens Gallery #80 .25 RF Pump
- Marlin 336 30-30 Lever
- Winchester 52 .22 Target Rifle Bolt
- Glenfield 30 .35 Rem. Lever
- Mauser 98 .22-250 w/Scope Bolt
- Winchester 43 .22 Hornet w/Leupold 3-9x Bolt
- Bernadelli Baby .22 Long Pistol
- Remington 742 30-06 150th Anniversary Semi Auto
- Remington 760 .358 Win. Pump
- Remington 750 .220 Swift w/Weaver 2.5-7x Pump
- Remington 760 .25-06 w/Tasco 4-12x Pump
- Remington 760.243 Win. w/Scope Pump
- Remington 760 .35-280 w/Scope & Dies Pump
- Italian Trap Special Single Shot 12-gauge
- Mosin Nagant 1937 7.62x54 R
- Eagle Arms Single Shot 12-gauge
- Daisy 717 .177 Air Pistol
- Weatherby 340 Stainless Steel Rifle w/break (new)
- Weatherby 240 w/break & Leupold Scope
- Stevens 22 250 w/Leupold Scope
- Browning 22 Semi Auto (new)
- Youth 22 w/Scope
- Springfield 12-gauge Double Barrel Shotgun (new)
- Stevens 12-gauge Shotgun
- Mossberg 12-gauge Pistol Grip Shotgun Stainless w/case (new)

### ANTIQUES & COLLECTIBLES

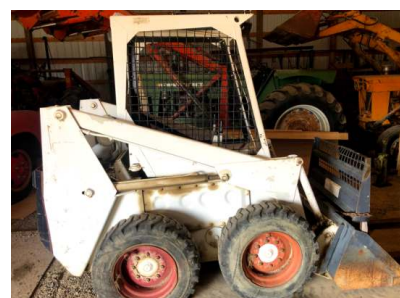
- Remington "Hi-Speed" Glass Front Ammo Display w/.22 Ammo Boxes
- Olympia Beer Ski-Doo Sign
- Great Falls Select Pictures
- Tonka Toys
- Copper Boiler
- Griswold Cast Iron Pans (12 different sizes)
- Numerous Wagner Cast Iron Pieces
- 8-gallon Red Wing Butter Churn (rare)
- 5-gallon Red Wing Water Cooler w/lid
- 2-gallon Red Wing Salt Glazed Crock
- Buz Saw blade
- Ice Saw
- Coal Auger
- Hardy Tool
- Buffalo Hide Scale
- Bullet Mold
- L.L. Lynd Lambert, MT JD
- Advertising Mirror
- Tractor Tire Ash Trays
- Winchester Pliers
- Bottle Cappers
- Mobile Grease Cans
- Galvanized Oil Drums
- Harvey Rattey Caribou Bronze
- C.R. Cheek Bronze
- Nadine Glazier Framed Prints
- Nadine Pickthorn Framed Prints
- Candy Long Rock Painting
- Long Horn Cattle Drive Picture
- Numerous Wildlife Prints
- 7' Set of Mounted Long Horns
- Caribou Horns
- Set of Hesston Rodeo Buckles (1975-1994)
- Brockway Buckles (1985-1993) ALL # 33
- McCone Co Diamond Jubilee Buckles (#33)
- Prairie Co Centennial Buckle (#33)
- 1990 Wolf Point 75th Jubilee Buckle (#1932)

### RECREATION, HOUSEHOLD & MISC.

- Shotgun Reloading Equipment
- Many Hunting Related Items
- Lots of Fishing Equipment & Tackle
- Bamboo Poles
- Electric Trolling Motor
- Ice Auger
- Minnow Seins
- Traps
- Recliner, (2) Roll-away Beds
- Dorm Fridge
- Curved Corner Cabinet
- GE 1/2 hp Meat Grinder
- Horse Tack
- Army Cots
- Misc. Snowmobile Parts

### MCCONE COUNTY EQUIP.

- JD 6420 Tractor, 90 hp, cab, 3 pt., PTO, nearly new tires, 4400 hours
- 1987 Chevy F3500 Van
- 1983 Ford F250 Pickup, 2x4, 92,175 miles
- 1964 GMC Dually Fire Truck, 28,775 miles
- 1953 American Civil Defense Jeep
- Peter Pirsch Fire Truck
- GMC 3/4 ton diesel Search & Rescue Van
- Military Surplus 100K Generator w/Cummins diesel engine
- Large pile of 16' Roofing Tin



**RK**  
Rick Kniepkamp



Circle, Montana STATEWIDE AUCTION (406) 485-2548

WE SELL & ADVERTISE ACROSS THE UNITED STATES

[www.r-kauction.com](http://www.r-kauction.com)

Rick Kniepkamp (406) 485-2548 or cell (406) 939-1632

### AUCTIONEER'S NOTE:

Wendell was a life-long time resident of McCone County. For many years he was the McCone County Museum Curator. He has some unique collectibles, antiques, and many guns. The guns will sell at 1:00 p.m. McCone Co. has added a few pieces. The JD tractor is in very good condition. This is a sale you will not want to miss! Hope to see you on May 29th! Rick

All information is from sources deemed reliable, but is not guaranteed by the Sellers or the Auctioneers. Offering is subject to error, omission, and approval of purchase by owner. We urge independent verification of each and every item submitted to the satisfaction of any prospective buyer. It is every potential bidder/purchaser's sole responsibility to accomplish his or her due diligence in whatever manner he or she deems advisable. Announcements made sale day take precedence over any printed materials. The items sell "As is-Where is." R-K Statewide Auction Service and its auctioneers are acting solely as auctioneers for the Sellers.